



PRESCHOOL DONE



GRADES K-2 DONE



ALL OTHER
GROUPS DONE

Happy Honey Bee



Art Class in a Box



1. LIGHTLY OUTLINE THE SHAPE OF THE BEE WITH THE BLACK PENCIL.
2. LIGHTLY ADD DETAILS TO THE BODY LIKE THE STRIPES ON THE ABDOMEN, FUZZY MARKS ON THE THORAX, WINGS, OVAL EYES, LEGS, AND ANTENNAE.



3. DARKEN THE EYES (LEAVE A WHITE HIGHLIGHT THOUGH), LEGS, ANTENNAE, AND THE ABDOMINAL STRIPES, ESPECIALLY WHERE THEY CURVE UNDER THE BELLY.



4. BEGIN ADDING SOME DETAILS: OUTLINE THE WINGS WITH BROWN, CREATE LINES ON THE WINGS TO SHOW THE PATTERN. MAKE SOME THIN, LIGHT BROWN FLUFF ON THE THORAX. THEN, ADD A LITTLE BROWN SHADING TO THE BODY BY THE STRIPES.



5. LAYER FLUFFY-LOOKING YELLOW OVER THE THORAX AND ABDOMEN. ADD HINT OF YELLOW TO THE WINGS TOO.

IS THERE ANYTHING ELSE YOU NEED TO ADJUST BEFORE WE ADD THE FLOWER?



6. BELOW THE BEE, CREATE A FLOWER OR BRANCH. FOR THE FLOWER YOU SEE IN THE EXAMPLE:

- MAKE A BROWN FLOWER HEAD WITH LITTLE POINTED STAMEN (THE PART OF THE FLOWER THAT HAS POLLEN ON IT) AS YOU SEE UNDER THE BELLY OF THE BEE.
- MAKE PURPLE PETALS.



7. CREATE A GREEN STEM & LEAF UNDER THE FLOWER.



IF YOU ARE IN THE YOUNGER GROUP, SKIP TO STEP 9.

8. CREATE SHADOWS UNDER THE PETALS, ON THE RIGHT EDGES OF THE FLOWER, AND UNDER THE STAMEN ON THE FLOWER.



9. USE YOUR WATER BRUSH TO GENTLY WET EACH SECTION OF THE FLOWER AND THE BEE. CLEAN YOUR BRUSH BY GENTLY SQUEEZING WATER OUT OF IT ONTO YOUR PAPER TOWEL AND PAINTING BACK AND FORTH UNTIL NO COLOR COMES OUT WITH THE WATER.
10. LET YOUR PAINTING DRY, THEN ADD MORE SHADOWS AND BRIGHTER COLORS WHEREVER YOU THINK IT NEEDS. ADD A BACKGROUND IF YOU WANT!

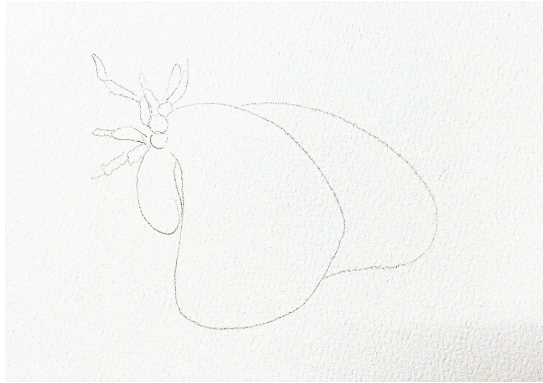


@ClassyArtistBox
#ClassyArtistBoxKids

Mega Moth



My Art Class in a Box



1. USE THE BLACK WATERCOLOR PENCIL TO OUTLINE THE MOTH'S WINGS FIRST. THEN, CREATE THE THORAX (UPPER BODY) AND FINALLY THE ABDOMEN, LEGS, AND BIG ANTENNAE.



2. NOW THAT WE HAVE THE OUTLINES, LET'S ADD DETAILS TO THE WINGS! CREATE THE SHAPES YOU SEE (ABOVE) OR ANOTHER DESIGN ON YOUR WINGS!



3. MAKE THE ABDOMEN DESIGN! FOR THE EXAMPLE, WE USED RECTANGLES AND SQUARES.



4. LET'S HOP BACK OVER TO THE WINGS AND ADD A LITTLE MORE TO THE DESIGN THERE!



5. LIGHTLY COLOR BROWN INSIDE THE WING DESIGN. LEAVE WHITE PAPER AROUND THE WING DESIGNS. COLOR A LITTLE BROWN UNDER THE BELLY AND ANTENNAE.



6. COLOR ORANGE ON THE WINGS IN THE SPACES SHOWN ABOVE. THEN, COLOR THE LEGS AND DESIGN ON THE BODY ORANGE TOO!



7. MAKE SOME BROWN LINES AROUND THE ORANGE DESIGN ON THE MOTH'S BODY.

IF YOU ARE IN THE YOUNGER GROUP, SKIP TO STEP 10. AFTER THAT, YOU ARE DONE!



8. CREATE A GREEN LEAFY BRANCH. ADD BLACK SHADOWY ACCENTS ON THE RIGHT & BOTTOM EDGES.

9. ADD BLACK SHADOWS ON THE WINGS. DRAW THEM UNDER THE EDGES OF THE DETAILS AND UNDER THE EDGES OF THE WINGS.



10. PAINT IN EACH SECTION OF COLOR WITH YOUR WATER BRUSH. CLEAN THE BRUSH BETWEEN COLORS LIKE BEFORE.



@ClassyArtistBox
#ClassyArtistBoxKids

Crimson Cardinal



Art Class in a Box



1. USE THE RED PENCIL TO LIGHTLY OUTLINE THE BEAK, HEAD, TUMMY, BACK, AND WING.
2. DRAW THE TAIL FEATHERS.
3. DRAW THE BRANCH WITH BLACK.



4. COLOR RED UNDER THE PARTS OF THE BEAK, ON THE CREST (TOP OF THE HEAD), OUTLINE THE EYE, UNDER THE WING, AND BETWEEN SOME FEATHERS ON THE WING AND TAIL.



5. FILL THE EYE BLACK, BUT LEAVE A SMALL, PLAIN WHITE DOT.
6. MAKE A LINE BETWEEN THE BEAK.
7. DRAW FEATHERS AROUND THE BEAK.
8. COLOR THE LEG WITH RED AND YELLOW.



9. SHADE THE BRANCH WITH BLACK AS THE SHADOW (UNDER THE BRANCH) AND BROWN ON TOP!

10. SHADE THE BIRD'S BODY WITH LIGHT LINES USING THE BLACK PENCIL. DO NOT PRESS HARD!!!!

11. MAKE A LITTLE MORE SHADOW UNDER THE BIRD'S BELLY AND RIGHT UNDER THE TAIL.



12. ADD VERY LIGHT YELLOW COLORED PENCIL ON THE BIRD'S BELLY.



13. COLOR THE LEAVES WITH YELLOW AND GREEN.

14. ADD A LITTLE BLACK SHADOW UNDER THE BIRD'S LEG AND TOES.

15. PUT A SMALL LINE OF RED ABOVE THE EYE.



16. USE YOUR WATER BRUSH TO BLEND EACH SECTION. CLEAN YOUR BRUSH BETWEEN COLOR CHANGES!

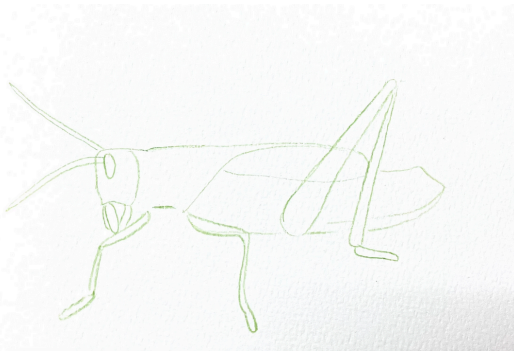
17. LET THE PAINTING DRY AND THEN ADD A BACKGROUND BY LIGHTLY COLORING THE BACKGROUND WITH THE COLOR YOU WANT. THEN, BLEND THE BACKGROUND WITH THE WATER BRUSH!

PRESCHOOL: SKIP TO STEP 16.

Gleeful Grasshopper



Art Class in a Box



1. VERY LIGHTLY OUTLINE THE SHAPE OF THE HOPPER'S HEAD.

2. ADD THE LINE ON THE GRASSHOPPER'S BACK.

3. DRAW THE SHAPE OF THE WING.

4. SHAPE THE ABDOMEN.

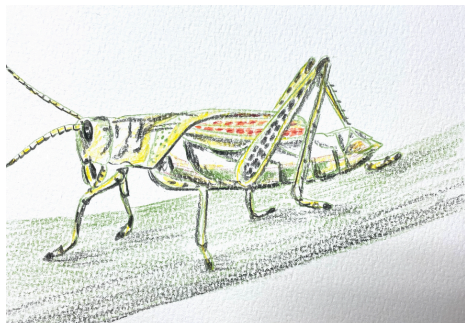
5. DRAW 2 LEGS UP FRONT AND ONE LARGE, BENT LEG IN THE MIDDLE OF THE ABDOMEN.

6. DRAW THE MOUTHPARTS.

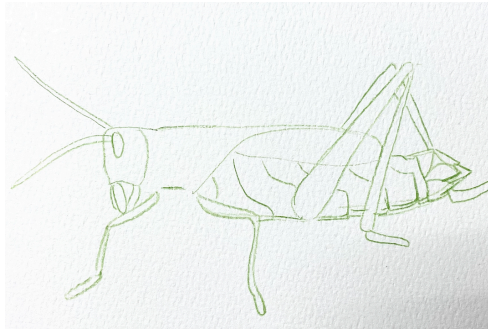


13. DRAW SHADOWS WITH BLACK ON THE ANTENNAE, LEGS, EYE, AND BETWEEN THE HEAD AND THE BODY.

14. ADD MORE DRAMATIC YELLOW ON THE HOPPER'S BACK.



17. MAKE A GREEN GRASS BLADE, BUT BLEND SOME BLACK INTO THE GREEN DOWN TOWARD THE BOTTOM OF THE GREEN SECTION.



7. THE GRASSHOPPER HAS SECTIONS TO ITS BELLY. LET'S DRAW THOSE SECTIONS NOW!

8. MAKE ANOTHER HIND LEG SHOWING BEHIND THE GRASSHOPPER.

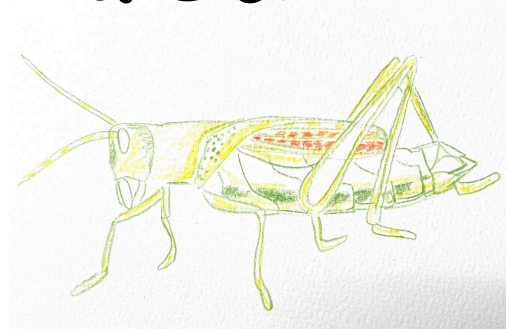
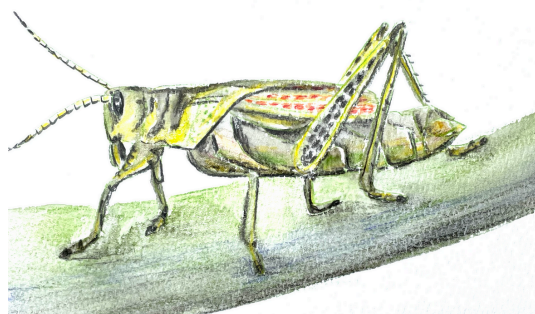
9. DRAW THE EYE OVAL NOW IF YOU HAVEN'T ALREADY.



15. CONTINUE ADDING SHADOWS TO THE BODY AS YOU THINK YOU SHOULD.



PRESCHOOL: WHEN YOU ARE DONE ADDING SOME BLACK SHADOWS, SKIP TO STEP 18!



10. COLOR YELLOW ON THE ANTENNAE, HEAD, LEGS, WINGS, AND PARTS OF THE BELLY AND BACK.

11. SHADE SOME GREEN UNDER THE BELLY AND DOT IT ON THE HEAD.

12. MAKE RED PATTERNING ON THE WING.



16. MAKE MORE SHADOWS ON THE GRASSHOPPER'S BELLY, A PATTERN ON THE LEGS, AND ADJUST EVERYTHING ELSE AS NEEDED!

MID-AGE ELEMENTARY STUDENTS: SKIP TO STEP 18 NOW IF YOU WANT!

18. PAINT EACH SECTION WITH THE WATER BRUSH. CLEAN YOUR BRUSH BETWEEN COLOR OR SECTION CHANGES!



ANYTHING ELSE YOU WANT TO ADD OR DO?



@ClassyArtistBox
#ClassyArtistBoxKids